



# Flight Plan & Site Survey

Created using **RPAS Wilco**®

Operation Name:	Drummonville
Pilot Name:	██████████
Pilot Certificate:	██████████
Flight Start:	April 28, 2023 3:59 PM
Flight End:	April 28, 2023 5:59 PM
Flight Area (Latitude):	45° 59' 5.90" N ( 45.985 )
Flight Area (Longitude):	72° 28' 44.60" W ( -72.479 )
Altitude - Radius:	Alt: 700 ft - Rad: 926.0 m ( 0.5 nm)
Airspace:	UNCONTROLLED
FIR - Contact:	CZUL - 506-867-7173

Please ensure you received all required authorizations prior to flight.

## Disclaimer

This Site Survey was created using RPAS Wilco by AIM Robotics. The flight plan contained is intended only for RPAS flights on the date/time and location specified. The user accepts all responsibility for the accuracy and completeness of the information contained.

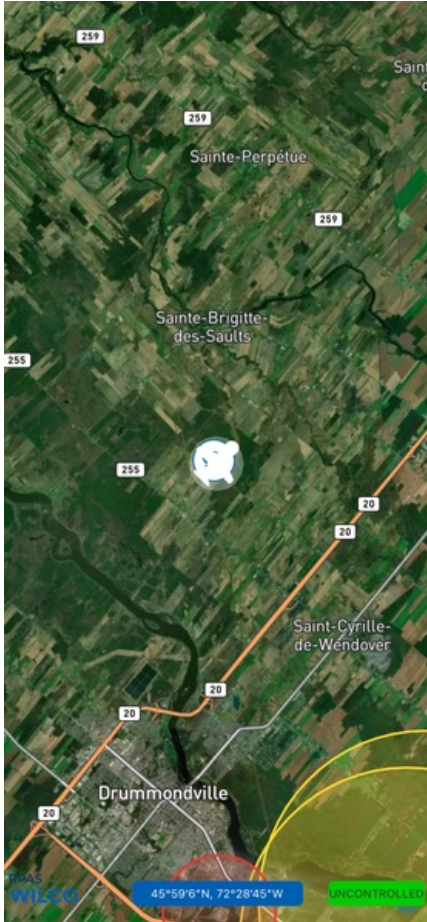
For the complete Terms & Conditions, see

<https://rpswilco.com/#/tnc>



## Included

- Site Survey
- Obstacles (if available)
- Nearby Aerodromes
- Canadian Aviation Regulations
- GFA
- Aerodrome Supplements
  - METAR & TAF (if available)
  - NOTAMS
  - CFS

## Flight Map



## MAP Details

	Latitude	Longitude
 <b>MODEL</b>	45° 59' 5.90" N ( 45.985 )	72° 28' 44.60" W ( -72.479 )
 <b>Pilot</b>	45° 59' 9.50" N ( 45.986 )	72° 28' 48.20" W ( -72.4801 )

## Airspace Classification



## Overlying Airspaces

Class	Name	Floor	Ceiling
E	T616 Airway	2200AGL	12500MSL
B	T616 Airway	12500MSL	18000MSL
E	T677 Airway	2200AGL	12500MSL
B	T677 Airway	12500MSL	18000MSL
E	Montreal FIR CAE	6000MSL	12500MSL
B	Montreal FIR CAE	12500MSL	18000MSL

## Nearest Aerodromes & Distance from Operation

DRUMMONDVILLE (CSA7 WATERDROME Reg)	Lat: 45.854	Long: 72.389	16.144 KM	8.72 NM
DRUMMONDVILLE (CSC3 AERODROME Reg)	Lat: 45.844	Long: 72.398	16.883 KM	9.12 NM
NICOLET (CSK9 HELIPORT DND)	Lat: 46.22	Long: 72.648	29.2 KM	15.77 NM
SOREL (CSY3 AERODROME Reg)	Lat: 45.98	Long: 73.042	43.5 KM	23.49 NM

# Canadian Aviation Regulations

## Division III — General Operating and Flight Rules

For full listing please visit <https://laws-lois.justice.gc.ca/eng/regulations/SOR-96-433/FullText.html#s-901.27>

### Visual Line-of-sight

- **901.11 (1)** Subject to subsection (2) no pilot shall operate a remotely piloted aircraft system unless the pilot or a visual observer has the aircraft in visual line-of-sight at all times during flight.
- **(2)** A pilot may operate a remotely piloted aircraft system without the pilot or a visual observer having the aircraft in visual line-of-sight if the operation is conducted in accordance with a special flight operations certificate — RPAS issued under section 903.03.

### Procedures

- **901.23 (1)** No pilot shall operate a remotely piloted aircraft system unless the following procedures are established:
  - **(a)** normal operating procedures, including pre-flight, take-off, launch, approach, landing and recovery procedures; and
  - **(b)** emergency procedures, including with respect to
    - **(i)** a control station failure,
    - **(ii)** an equipment failure,
    - **(iii)** a failure of the remotely piloted aircraft,
    - **(iv)** a loss of the command and control link,
    - **(v)** a fly-away, and
    - **(vi)** flight termination.
- **(2)** If the manufacturer of the remotely piloted aircraft system provides instructions with respect to the topics referred to in paragraphs (1)(a) and (b), the procedures established under subsection (1) shall reflect those instructions.
- **(3)** No pilot shall conduct the take-off or launch of a remotely piloted aircraft unless the procedures referred to in subsection (1) are reviewed before the flight by, and are immediately available to, each crew member.
- **(4)** No pilot shall operate a remotely piloted aircraft system unless the operation is conducted in accordance with the procedures referred to in subsection (1).

### Site Survey

**901.27** No pilot shall operate a remotely piloted aircraft system unless, before commencing operations, they determine that the site for take-off, launch, landing or recovery is suitable for the proposed operation by conducting a site survey that takes into account the following factors:

- **(a)** the boundaries of the area of operation;
- **(b)** the type of airspace and the applicable regulatory requirements;
- **(c)** the altitudes and routes to be used on the approach to and departure from the area of operation;
- **(d)** the proximity of manned aircraft operations;
- **(e)** the proximity of aerodromes, airports and heliports;
- **(f)** the location and height of obstacles, including wires, masts, buildings, cell phone towers and wind turbines;
- **(g)** the predominant weather and environmental conditions for the area of operation; and
- **(h)** the horizontal distances from persons not involved in the operation.

### Operations at or in the Vicinity of an Aerodrome, Airport or Heliport

- **901.47 (1)** No pilot shall operate a remotely piloted aircraft at or near an aerodrome that is listed in the *Canada Flight Supplement* or the *Water Aerodrome Supplement* in a manner that could interfere with an aircraft operating in the established traffic pattern.
- **(2)** Subject to section 901.73 no pilot shall operate a remotely piloted aircraft at a distance of less than
  - **(a)** three nautical miles from the centre of an airport; and
  - **(b)** one nautical mile from the centre of a heliport.
- **(3)** No pilot shall operate a remotely piloted aircraft at a distance of less than three nautical miles from the centre of an aerodrome operated under the authority of the Minister of National Defence unless the operation is conducted in accordance with a special flight operations certificate — RPAS issued under section 903.03.

### Records

- **901.48 (1)** Every owner of a remotely piloted aircraft system shall keep the following records:
  - **(a)** a record containing the names of the pilots and other crew members who are involved in each flight and, in respect of the system, the time of each flight or series of flights and
  - **(b)** a record containing the particulars of any mandatory action and any other maintenance action, modification or repair performed on the system, including
    - **(i)** the names of the persons who performed them,
    - **(ii)** the dates they were undertaken,
    - **(iii)** in the case of a modification, the manufacturer, model and a description of the part or equipment installed to modify the system, and
    - **(iv)** if applicable any instructions provided to complete the work.
- **(2)** Every owner of a remotely piloted aircraft system shall ensure that the records referred to in subsection (1) are made available to the Minister on request and are retained for a period of
  - **(a)** in the case of the records referred to in paragraph (1)(a), 12 months after the day on which they are created; and
  - **(b)** in the case of the records referred to in paragraph (1)(b), 24 months after the day on which they are created.
- **(3)** Every owner of a remotely piloted aircraft system who transfers ownership of the system to another person shall, at the time of transfer, also deliver to that person all of the records referred to in paragraph (1)(b).

# CANADA WATER AERODROME SUPPLEMENT

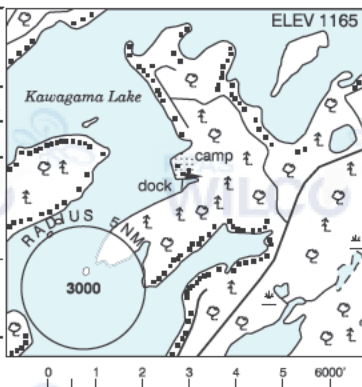
Effective 0901Z 20 April 2023 to 0901Z 21 March 2024

## B44. AERODROME/FACILITY DIRECTORY

### DORSET / KAWAGAMA LAKE (SOUTH) ON

CDK3

<b>REF</b>	N45 15 50 W78 47 32 4.5ENE 11°W (2012) UTC-5(4) Elev 1165' A5000
<b>OPR</b>	Mike Wiebe 905-520-8500 Reg PPR
<b>PF</b>	C-1,2 D-4,5
<b>FLT PLN</b>	<b>FIG</b> London 866-WXBRIEF (Toll free w/ in Canada) or 866-541-4104 (Toll free within Canada & USA)
<b>A/D DATA</b>	Open water May-Nov. Water depth min 4' at dock. Sand beach in front, and on nor h side of bay behind dock.
<b>COMM</b>	<b>ATF</b> tfc 123.2 5NM 4200 ASL

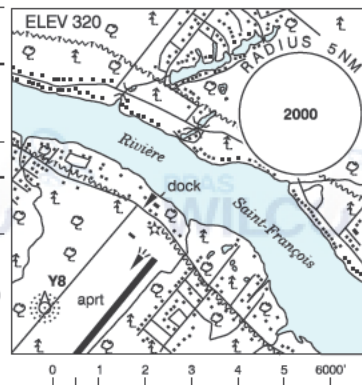


**CAUTION** Wind from NW may bring downdrafts across nearby hill. Numerous watercraft Jul-Aug. Windsock may not indicate east winds accurately

### DRUMMONDVILLE QC

CSA7

<b>REF</b>	N45 51 16 W72 23 22 4E 15°W (2013) UTC-5(4) Elev 320' A5002
<b>OPR</b>	SDED -Aéroport de Drummondville 819-472-1011 Fax 819-472-4291 Reg PPR
<b>PF</b>	B-1 C-2,3,4,5,7,8
<b>CUST</b>	AOE/15 888-226-7277 1330-2130Z± Mon-Fri exc hols
<b>FLT PLN</b>	(bil) <b>FIG</b> Québec 866-GOMÉTÉO or 866-WXBRIEF (Toll free within Canada) or 866-541-4105 (Toll free within Canada & USA)
<b>ACC</b>	Montréal 800-633-1353
<b>WX</b>	AUTO 819-850-0624 H24 (see COMM)



<b>SERVICES</b>	
<b>FUEL</b>	100LL, JA PN only
<b>OIL</b>	80, 100, 15W50
<b>S</b>	2,5

**A/D DATA** Open water May-mid Nov. Depth 4', sand bottom. Ramp.

<b>COMM</b>	(bil) <b>MF</b> UNICOM ltd hrs O/T tfc 122.8 5NM 3400 ASL (CAR 602.98)
<b>AUTO</b>	122.55

**NAV**  
**NDB** Y8 401 (L) N45 50 50 W72 23 56

**PRO** Land A/D adj, acft at low alt over the river.

**CAUTION** P-line crossing 533 ASL 3NM SE.

# CANADA WATER AERODROME SUPPLEMENT

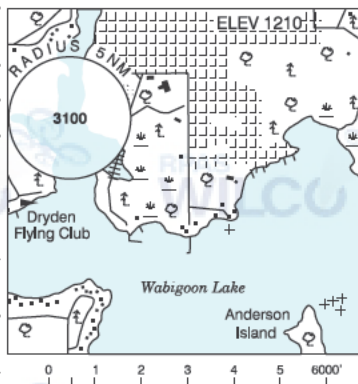
Effective 0901Z 20 April 2023 to 0901Z 21 March 2024

AERODROME/FACILITY DIRECTORY B45

## DRYDEN ON

CJD8

<b>REF</b>	N49 46 W92 50 1S 0° UTC-6(5) Elev 1210' A5007
<b>OPR</b>	Dryden Flying Club 807-221-9363 Reg
<b>PF</b>	B-1 C-2,3,4,5,6
<b>FLT PLN</b>	Pilots to open/close VFR flt plan with London rdo, FISE or by phone
<b>FIC</b>	London 866-WXBRIEF (Toll free w/ in Canada) or 866-541-4104 (Toll free within Canada & USA)
<b>SERVICES</b>	
<b>S</b>	5
<b>A/D DATA</b>	Open water mid May-mid Nov. Ramp & docks.
<b>COMM</b>	
<b>MF</b>	Sioux Lookout rdo 122.1 5NM centred on Dryden Regional land A/D 5.2NM NE 4400 ASL (CAR 602.98)
<b>NAV</b>	
<b>DME</b>	IHD 109.7 Ch 34 N49 50 06 W92 44 58 (1383')
<b>CAUTION</b>	Reef. Floating logs & deadheads.

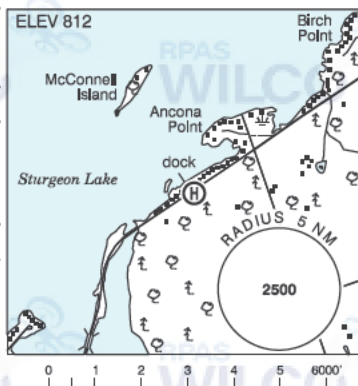


## DUDLEY BAY ON — See LAKE MUSKOKA / DUDLEY BAY

## DUNSFORD SEAPLANE BASE ON

CDS5

<b>REF</b>	N44 30 07 W78 37 05 3.2NNE 11°W (2020) UTC-5(4) Elev 812' A5000
<b>OPR</b>	Cecil Shaw 705-928-2933 Reg PPR
<b>FLT PLN</b>	
<b>FIC</b>	London 866-WXBRIEF (Toll free within Canada) or 866-541-4104 (Toll free within Canada & USA)
<b>A/D DATA</b>	Open water May-Oct
<b>COMM</b>	
<b>ATF</b>	tfc 122.8 3NM centred on Dunsford Heliport adj SE 4000 ASL



## QUEBEC

## AERODROME/FACILITY DIRECTORY

## DRUMMONDVILLE QC

CSC3

<b>REF</b>	N45 50 37 W72 23 51 4ESE 15°W (2013) UTC-5(4) Elev 368' A5002 LO6 LO7 LO8 CAP	
<b>OPR</b>	SDED Aéroport Drummondville 819-472-1011 Fax 819-472-4291 Reg	
<b>PF</b>	B-1,7,8 C-2,3,4,5,6	
<b>CUST</b>	AOE/15 888-226-7277 1330-2130Z† Mon-Fri exc hols	
<b>FLT PLN</b>	(bil)	
<b>FI</b>	Québec 866-GOMÉTÉO or 866-WXBRIEF (Toll free w/ in Canada) or 866-541-4105 (Toll free within Canada & USA)	
<b>ACC</b>	Montréal 800-633-1353	
<b>WX</b>	AUTO 819-850-0624 H24 (see COMM)	
<b>SERVICES</b>	Call out chgs	
<b>FUEL</b>	100LL, JA	
<b>OIL</b>	80, 100, 15W50	
<b>S</b>	1,2,4,5,6	
<b>RWY DATA</b>	Rwy 06(056°)/24(236°) 6003x100 ASPH RESA: 06/24 197'	
<b>TWY</b>	Tran acct to use Twy A. Twy B for lcl tfc. Twy C for pvt tfc. Gnd vehicle in vic of Twy C.	
<b>RCR</b>	Opr Ltd win maint	
<b>LIGHTING</b>	06-AS(TE HI) P1, 24-AS(TE HI) P1 ARCAL-122.8 type K	
<b>COMM</b>	(bil)	
<b>MF</b>	UNICOM ltd hrs O/T tfc 122.8 5NM 3400 ASL (CAR 602.98)	
<b>AUTO</b>	122.55	
<b>NAV</b>		
<b>NDB</b>	Y8 401 (L) N45 50 50 W72 23 56 Pvt	
<b>PRO</b>	Glider activity in the vic of A/D sfc up to 3000 ASL Sat-Sun & hols days fr mid-May to mid-Jun & fr mid-Aug to the end of Oct. <b>Considerations for noise abatement:</b> a) <b>Preferential rwy:</b> Landing and takeoff Rwy 24 when arpt and wind conditions allow (wind speed less than 5 kts). b) <b>Departure:</b> Climb rwy hdg to 1000 AGL BPOC or in the circuit. Best rate of climb where possible.	
<b>CAUTION</b>	Possibility of deer on rwy at night.	

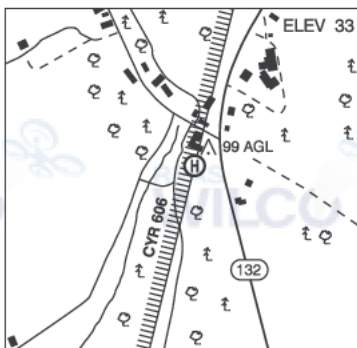
## QUEBEC

## AERODROME/FACILITY DIRECTORY

## NICOLET QC (Heli)

CSK9

<b>REF</b>	N46 13 13 W72 38 52 3E 16°W UTC-5(4) Elev 33' A5002
<b>OPR</b>	DND Range Controller 819-293-2004 Mil PPR
<b>FLT PLN</b>	(bil)
<b>MIL</b>	819-293-2004 when range in use or dur working hrs
<b>HELI DATA</b>	125' x 250'
<b>COMM</b>	
<b>ATF</b>	tfc 123.2 5NM 3000 ASL exc airspace of CYR 606 and excluding Trois-Rivières (CYRQ) MF area.
<b>PRO</b>	Caution; helipad on eastern bdry of CYR 606. Safe apch may only be made by remaining clear of rstd area til apch from E is possible. Dep hdg 089° mandatory.





## QUEBEC

## AERODROME/FACILITY DIRECTORY

## SOREL QC

CSY3

<b>REF</b>	N45 58 49 W73 02 32 4SE 16°W UTC-5(4) Elev 76' VTA A5002 LO6 LO7 LO8	
<b>OPR</b>	Gestion Aéroportuaire de Sorel 450-782-3188 Reg	
<b>PF</b>	C-2,3,4,5,6	
<b>FLT PLN</b>	(bil)	
<b>FIC</b>	Québec 866-GOMÉTÉO or 866-WXBRIEF (Toll free within Canada) or 866-541-4105 (Toll free within Canada & USA)	
<b>SERVICES</b>		
<b>FUEL</b>	100LL, JA-1	
<b>OIL</b>	15W50	
<b>S</b>	4,5	
<b>RWY DATA</b>	Rwy 03/21 4000x75 asphalt	
<b>RCR</b>	Gestion Aéroportuaire de Sorel 450-782-3188	
<b>LIGHTING</b>	03-(TE LO), 21-(TE LO) O/R PN 450-782-3188.	
<b>COMM</b>	(bil)	
<b>ATF</b>	ffc 123.2 5NM 3100 ASL	
<b>CAUTION</b>	Hi trees W of rwy.	